

Leased &
Managed by:

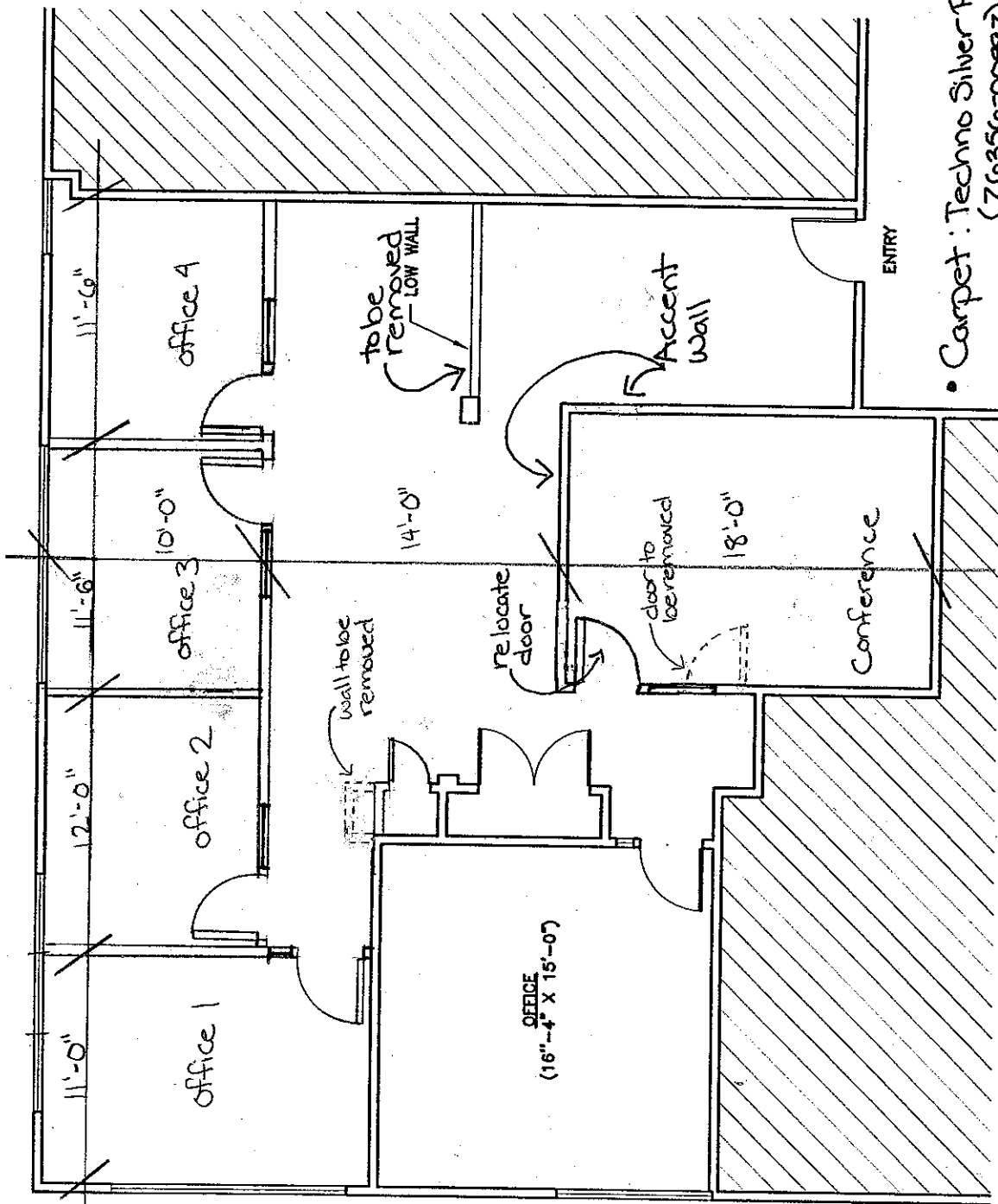
DAVENPORT
PARTNERS



Ray Lin
800 S. Barranca Avenue
Covina, CA 91723
(626) 578-9000
rlin@davenportpartners.com
www.davenportpartners.com



GENE FONG
ASSOCIATES
ARCHITECTURE • PLANNING • INTERIORS
310 • 507 • 7820



- Carpet: Techno Silver Plum (Z6356-00997)
- Paint: Bare China (SP514)
Accent: Sahara (SP513)
- Base: Espresso (103)

SUITE 110

2043 S.F.

SCALE: 1/8" = 1'-0"

OCTOBER 2, 2006

2601 Ocean Park Blvd

2601 Ocean Park Blvd, Santa Monica, CA 90405