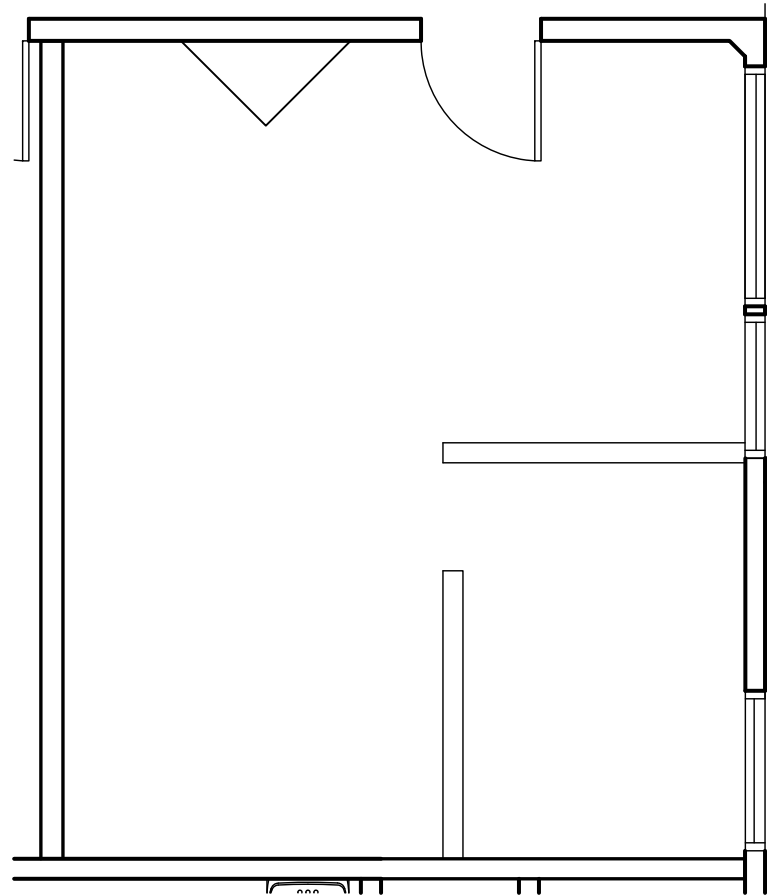


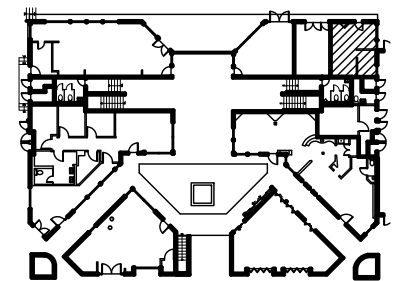


# LIDO MARINA VILLAGE

3424 Via Oporto  
Newport Beach, CA 92663



SUITE 103A  
249 RSF  
SCALE: 1/4" = 1'-0"



KEY PLAN  
N.T.S.

**DAVENPORT  
PARTNERS**



TEL: 949.720.8400  
Angela Brand: [abrand@davenportpartners.com](mailto:abrand@davenportpartners.com)  
Mark Valentine: [mvalentine@davenportpartners.com](mailto:mvalentine@davenportpartners.com)

**VORNADO**  
REALTY TRUST

On-site Leasing Office:  
3422 Via Lido, Newport Beach, CA 92663

ALL DIMENSIONS ARE APPROXIMATE AND ARE SUBJECT TO NORMAL BUILDING VARIANCES Date: 02-17-10