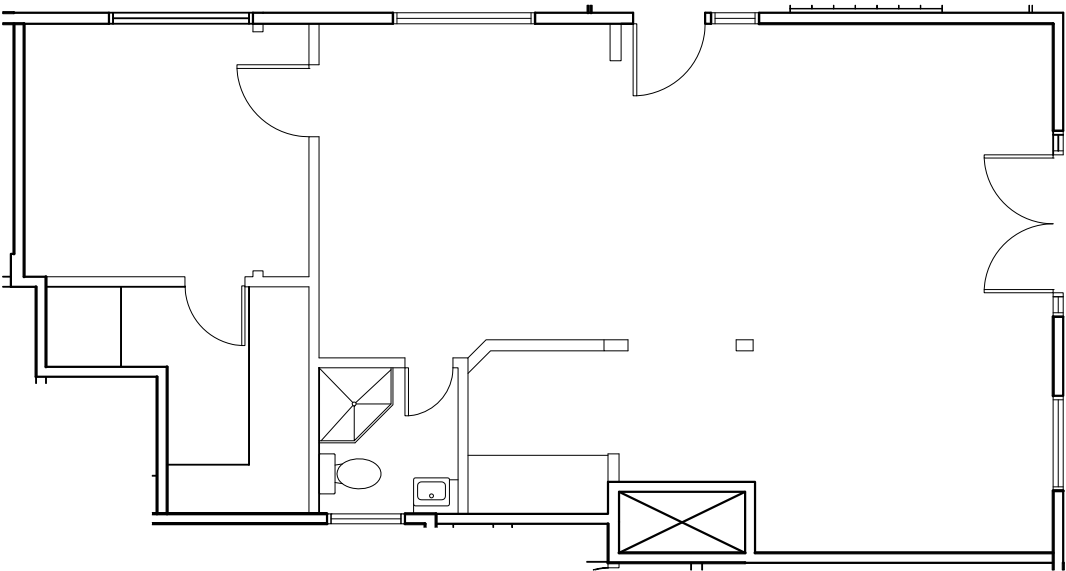


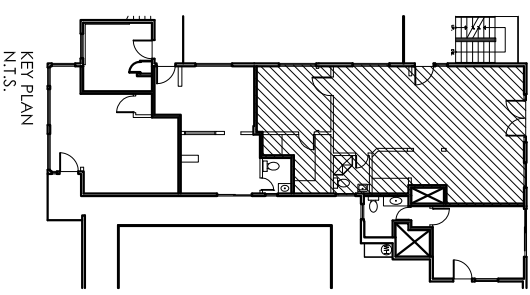


# LIDO MARINA VILLAGE

3416 Via Oporto  
Newport Beach, CA 92663



SUITE 204  
1,021 RSF  
SCALE: 1/8"=1'-0"



KEY PLAN  
N.T.S.



TEL: 949.720.8400

Angela Brandt: [abrاند@davenportpartners.com](mailto:abrاند@davenportpartners.com)  
Mark Valentine: [mvalentine@davenportpartners.com](mailto:mvalentine@davenportpartners.com)

**VORNADO**  
REALTY TRUST

On-site Leasing Office:  
3422 Via Lido, Newport Beach, CA 92663

ALL DIMENSIONS ARE APPROXIMATE AND ARE SUBJECT TO NORMAL BUILDING VARIANCES     Date: 02-17-10