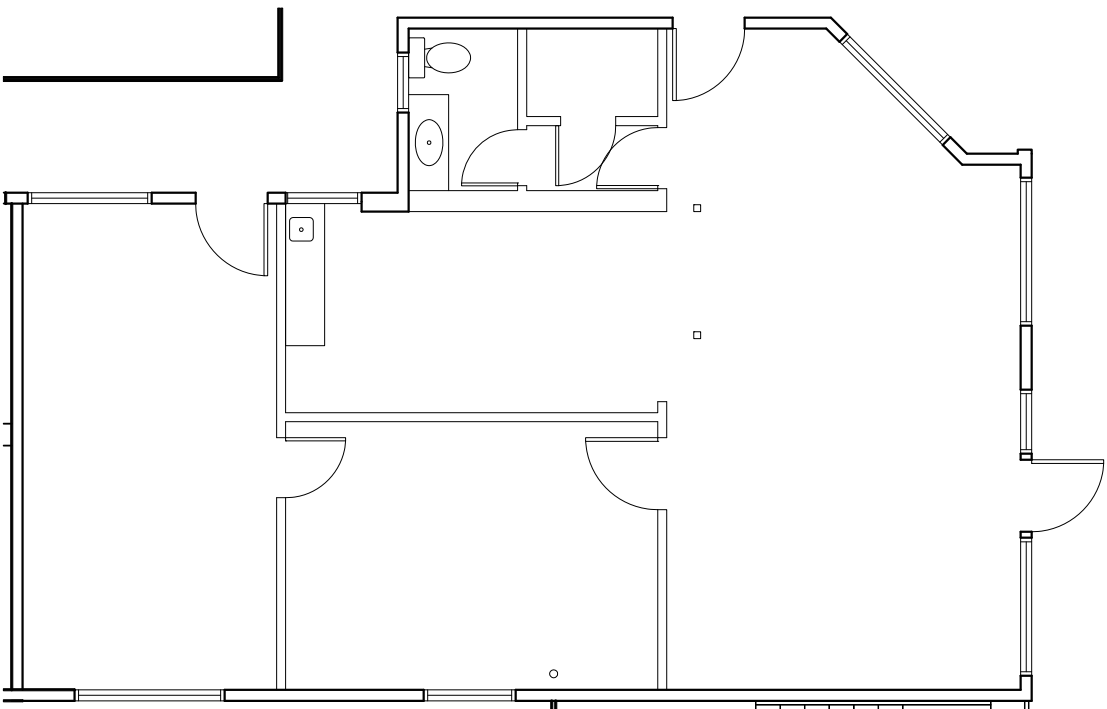


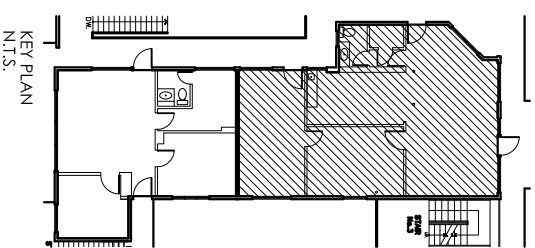


LIDO MARINA VILLAGE

3412 Via Oporto
Newport Beach, CA 92663



SUITE 203
1,193 RSF
SCALE: 1/8" = 1'-0"



KEY PLAN
N.T.S.



TEL: 949.720.8400

Angela Brandt: abrاند@davenportpartners.com
Mark Valentine: mvalentine@davenportpartners.com

VORNADO

REALTY TRUST

On-site Leasing Office:
3422 Via Lido, Newport Beach, CA 92663

ALL DIMENSIONS ARE APPROXIMATE AND ARE SUBJECT TO NORMAL BUILDING VARIANCES Dcte: 02-17-10