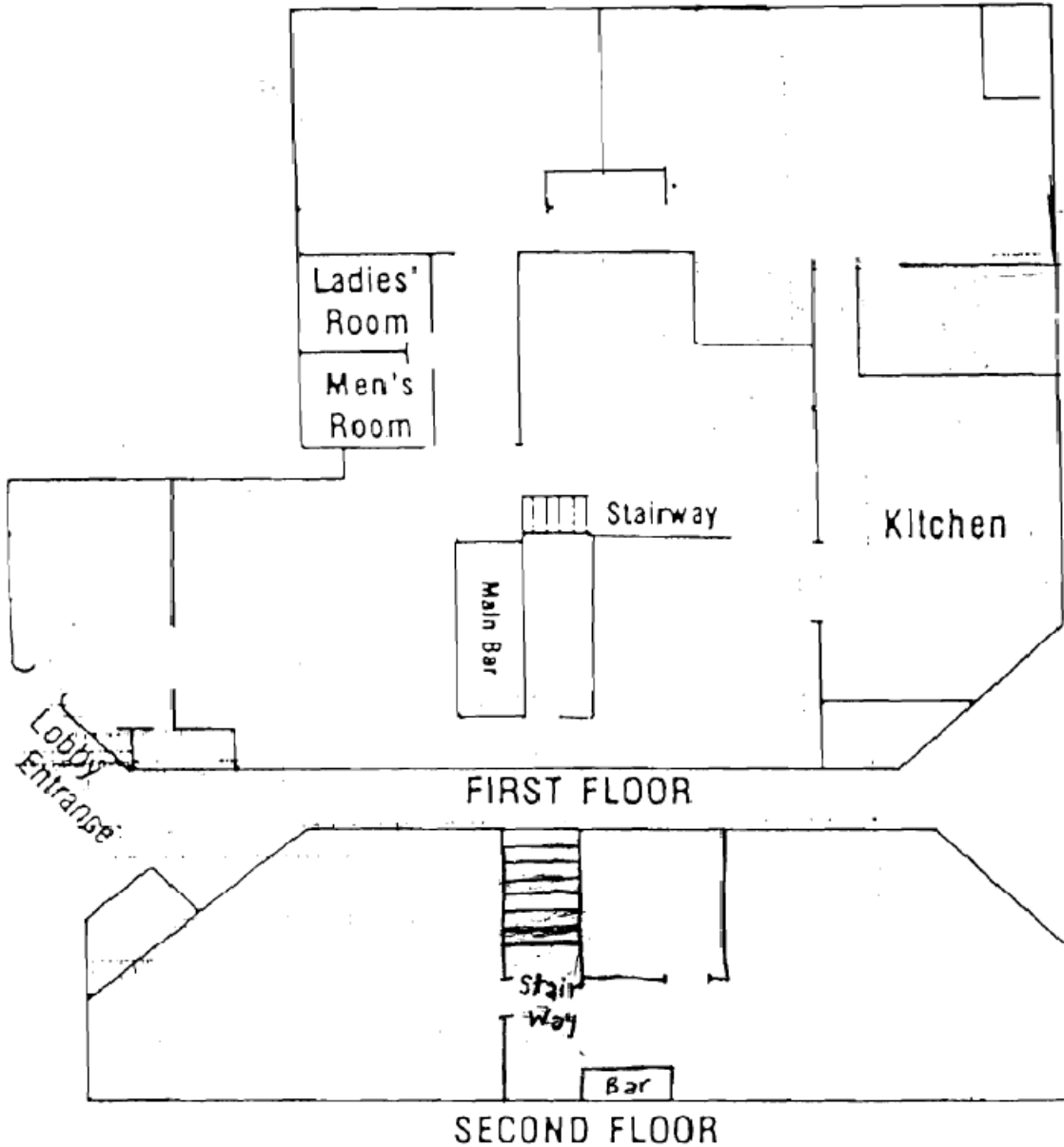


LIDO MARINA VILLAGE - 3505 Via Oporto

Restaurant Opportunity

First Floor - 11,000

Second Floor - 3,400



DAVENPORT PARTNERS



3422 Via Lido
Newport Beach, CA 92660
949.720.8400, ext. 1
949.288.6550 Fax

Leasing Contacts:

Angela Brand

CA DRE License #: 01735966

abrand@davenportpartners.com

Mark Valentine

CA DRE License#: 00846431

mvalentine@davenportpartners.com

Davenport Partners is an agent for:

VORNADO
REALTY TRUST

You can also visit www.lidomarinavillage.com for additional information.