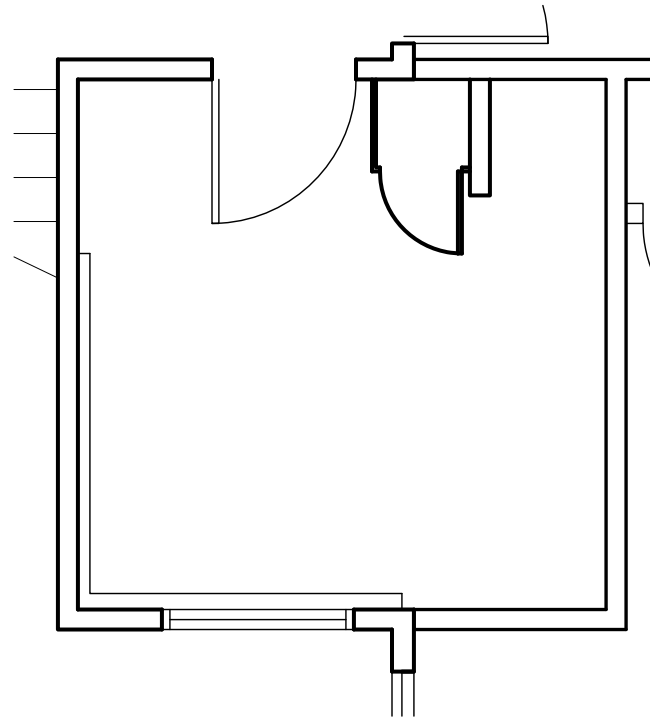


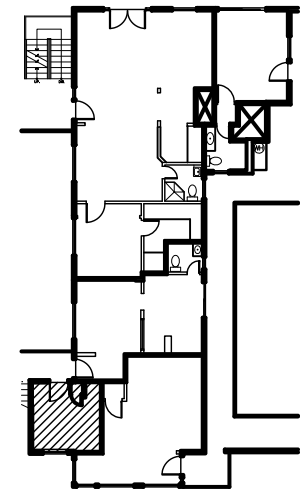


LIDO MARINA VILLAGE

3416 Via Oporto
Newport Beach, CA 92663



SUITE 202
149 RSF
SCALE: 1/4" = 1'-0"



KEY PLAN
N.T.S.



TEL: 949.720.8400
Angela Brand: abrand@davenportpartners.com
Mark Valentine: mvalentine@davenportpartners.com

ALL DIMENSIONS ARE APPROXIMATE AND ARE SUBJECT TO NORMAL BUILDING VARIANCES Date: 02-17-10

VORNADO
REALTY TRUST
On-site Leasing Office:
3422 Via Lido, Newport Beach, CA 92663